

# Trouble shooting for all electric pump systems

## NO SUCTION

1. Disconnect tube in front of machine (see step 3).
2. Disconnect discharge hose (this is the white hose with nozzle).
3. Plug machine into an outlet, turn switch on, put your finger or thumb against the fitting in front of the machine. This will determine if there is suction or not. If there is suction, you will feel your finger or thumb trying to get pulled in, if not then there is a clog in the pump.

4. Remove the 4 allen set screws (step 4) from the pump head. Remove end cap, you will see 5 white rollers & the rotor (which the rollers fit into) take out rollers & rotor.

### **DO NOT LOSE THE ROLLERS**

Look in the port holes of the pump for any fat plugs or solid shortening. If there is any sign of the holes being blocked, use some sort of heat (like a hair dryer) to remove the blockage.

### **DO NOT USE WATER**

5. Before replacing the rollers, rotor & end cap make sure the large black o-ring is seated in the groove of the pump head (see **BLACK LINE** on pump head)  
Replace rollers, rotor, end cap & set screws back onto the pump head.

### **MAKE SURE THE RAISED LINE ON THE CAP MATCHES THE RAISED LINE ON THE PUMP BODY (see step 5).**

6. Repeat step 3. You should now have suction.
7. If still no suction, the next step would be to clear the intake tube in the front of the machine. To do this, take a piece of wire (like a coat hanger) and push it all the way through the tube to push any food items out that may be stuck in the bend of the tube.

### **RUNNING WATER THROUGH THE TUBE WILL NOT WORK!!**

8. Attach tube and discharge hose back onto machine. Pour about 1/4 cup of warm oil down through the discharge hose to prime the pump.  
Turn the machine on, you should now have suction.
9. If still no suction, rollers or o-rings have to be replaced.



# Trouble shooting for all electric pump systems

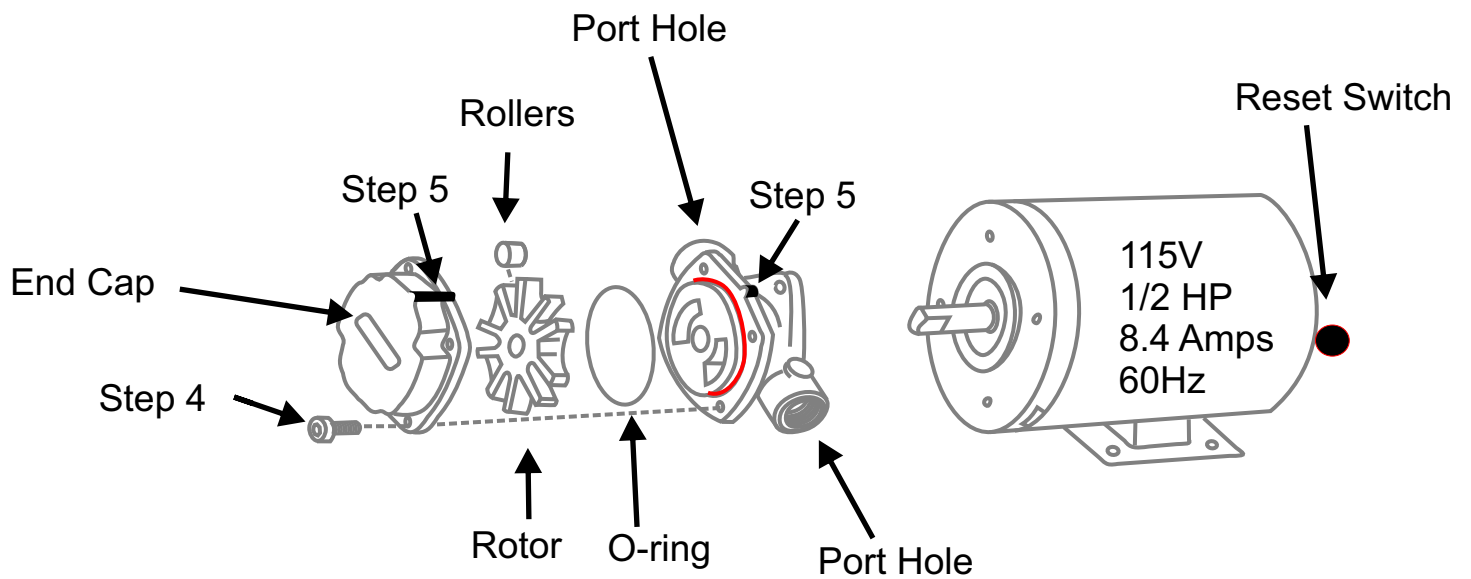
## NO POWER

## MAKE SURE OUTLET IS WORKING

1. Disconnect tube in front of machine (see step 3).
2. Disconnect discharge hose (this is the white hose with nozzle).
3. Remove the 4 allen set screws (step 4) from the pump head. Remove end cap, you will see 5 white rollers & the rotor (which the rollers fit into) take out rollers & rotor.  
**DO NOT LOSE THE ROLLERS**
4. Turn the machine on - watch for the motor shaft to spin - if the shaft DOES NOT spin, push the RED reset switch (as hard as you can) located on the back of the motor.
5. If motor shaft spins, then there is a blockage in the pump. (See 5A)  
If the motor shaft DOES NOT spin, then there is a possibility of a wiring problem.
- 5A. Look in the port holes of the pump for any fat plugs or solid shortening. If there is any sign of the holes being blocked, use some sort of heat (like a hair dryer) to remove the blockage.
6. Before replacing the rollers, rotor & end cap make sure the large black o-ring is seated in the groove of the pump head (see **BLACK LINE** on pump head)  
Replace rollers, rotor, end cap & set screws back onto the pump head.

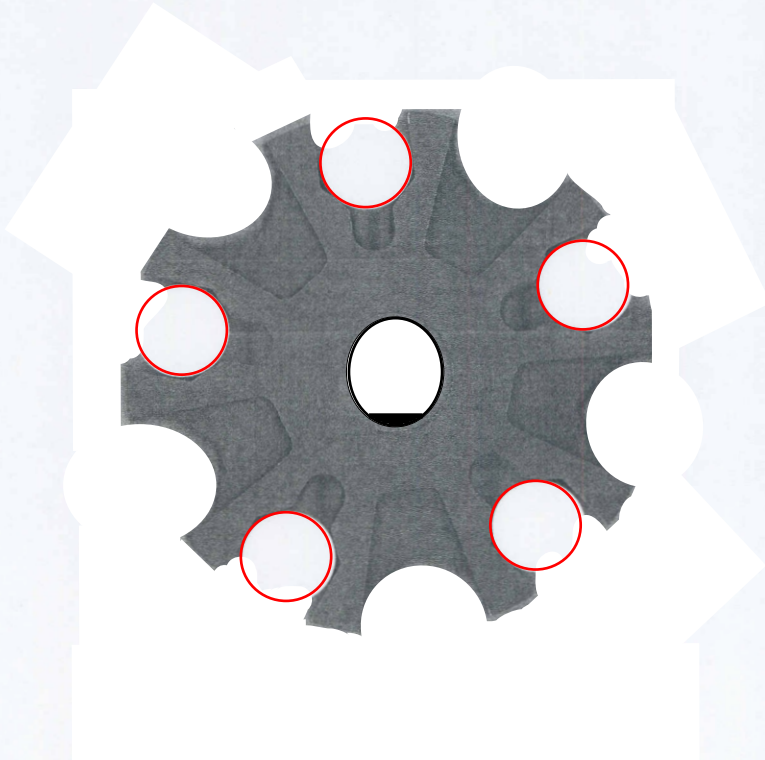
**MAKE SURE THE RAISED LINE ON THE CAP MATCHES  
THE RAISED LINE ON THE PUMP BODY (see step 5).**





— = Raised line Step 5

## GOOD ROLLERS



**RED CIRCLES INDICATE ROLLERS**

## WORN ROLLERS

